

Flush-mount wall frame and frame holders for 3 double elements white Simon 500 Cima

Ref.: **51010103-030**

BASIC INFORMATION

Series	Simon 500 Cima
Version	3 double elements
Number of modules	6
Finish	White
Available in	1, 2, 3, 4 and 6 double elements
KIT availability	Sí
Compatibility	Simon 500 Cima and Simon 27 Play/Simon K45 mechanisms (using specific adaptors), combinable with the Simon Trunking range
Packaging contents	Flush-mount wall frame, frame holders, metal partition wall, ground connection cable and installation manual
Remarks	Alternatively, you can screw the frame holders into the box if additional fastening is required.

Technical information

Dimensions	220 x 164 mm
Depth	21 mm
Heat resistance	+125 °C (in accordance with standard IEC 60695-10-2)
Extinguishing	+850 °C / 30 seconds (GWFI in accordance with standard IEC 60695-2-11)
Insulation resistance	>5MOhms at 500V
Dielectric strength	No holes or contours, with 2000V at 50 Hz for 1 minute
Electromagnetic immunity for VDM wiring	Secured by installing the metal partition wall in the housing fitted into the box for this purpose.
IP rating	4X
IK Classification	7
RAL	9003
Manufacturing material	Halogen-free thermoplastic that guarantees no flame propagation in case of fire and low toxicity in case of smoke emission.
Type of product	Standard
Market available	CE

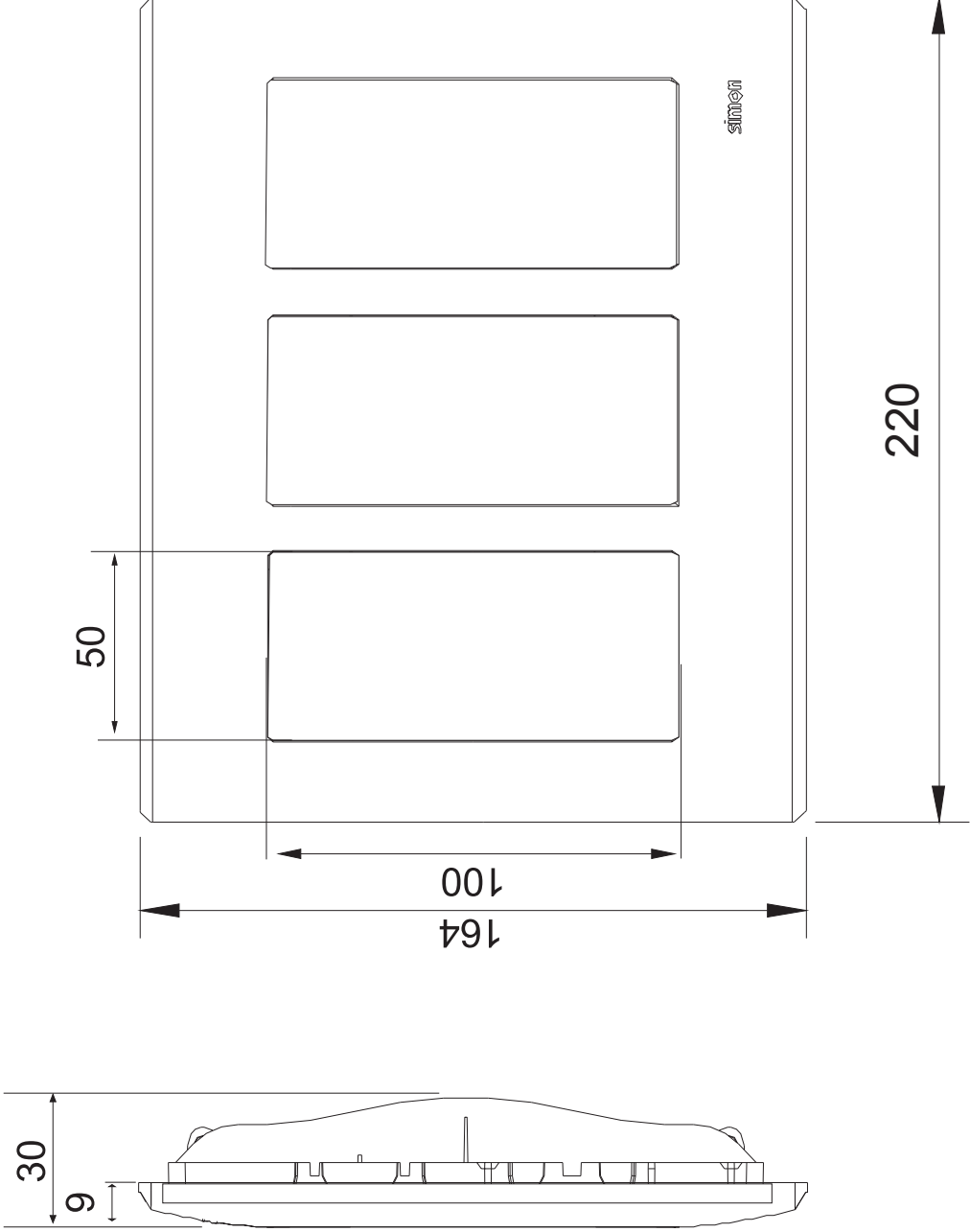
Regulations

Regulations	Directive 2014/35/UE LVD + EN 60670-1:2005
-------------	--

Installation and maintenance

Installation type	Suitable for flush mounting on the wall
Type of fastening	By direct snap-fit in the selected box (no tools needed for fastening)
Installation direction	Vertical, corresponding with the direction of the mechanisms
Installable in flush mount junction box	Specific Simon 500 Cima
Removal of the frame	Only with tool

Removal of components	Only with tool
Recess dimension	141 x 199 mm
Distance between flush mount boxes for optimum alignment	22 mm
Temperature range during installation	-5 to 60 °C
Max. temp. during construction work	+90 °C
Maintenance	Clean with a soft, dry cloth. Do not use abrasive cloths or cleaning products that contain chlorine.





www.simonelectric.com



SIMON, S.A.U.

Diputación, 390-392
08013 Barcelona (Spain)
Tel.: +34 93 547 81 81